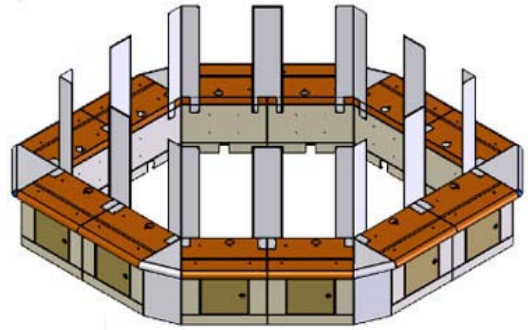


PURSE GUARDS AND END CAPS

PURSE GUARDS

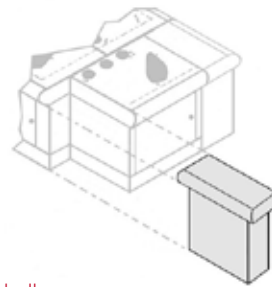
- Covers unsightly seams, power and mouse holes
- Bolt on, pem stud design: no exposed screws
- Available in a variety of durable powder coat colors
- Reduces theft of players' valuables
- Prevents refuse from collecting behind machine
- Won't crack, wear, or disfigure like Plexiglas
- Hides power cords, columns and gaps between machines
- Prevents refuse from collecting in carousel center
- Designed to mount on bases without drilling into game



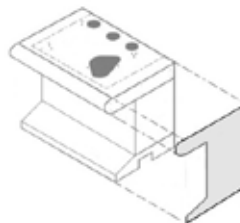
END CAPS AND CORNER CAPS

Custom heights are available upon request. Choose from a variety of durable powder coat finishes.

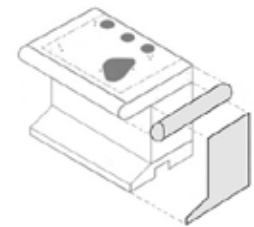
The purse guard panels are constructed of 14 GA steel and is prepped with mounting holes for easy attachment to slot base. Standard height above base is 30".



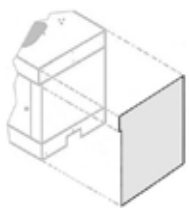
bull nose corner cap



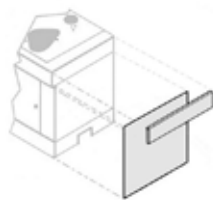
single unit 1 piece bull nose endcap



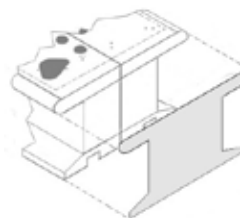
single unit 2 piece bull nose endcap



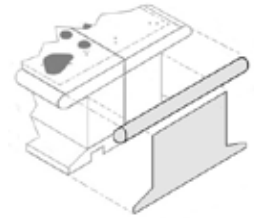
single unit 1 piece endcap



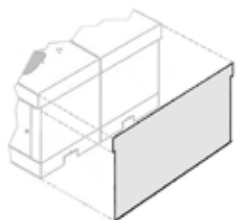
single unit 2 piece endcap



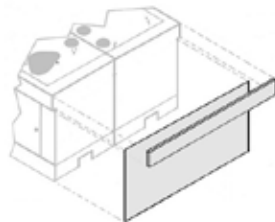
dual unit 1 piece bull nose endcap



dual unit 2 piece bull nose endcap



dual unit 1 piece endcap



dual unit 2 piece endcap

